
OCCIDENTAL TOWER

FOR LEASE

5005 LBJ Freeway Dallas, Texas 75244



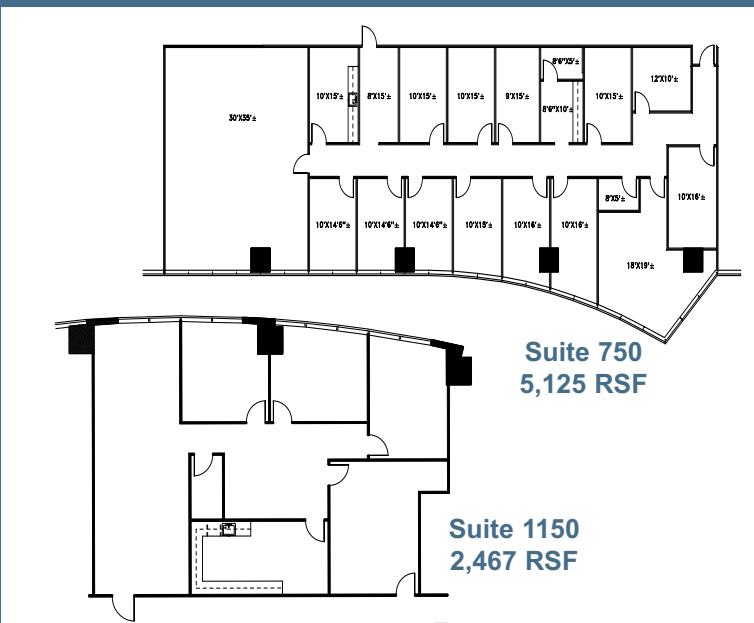


OCCIDENTAL TOWER

5005 LBJ Freeway Dallas, Texas 75244

FOR LEASE

- Class A Landmark Building
- Prominent Dallas location at the northwest corner of Hwy I-635 and Dallas North Tollway
- Great Tollway Views
- Convenient garage parking directly beneath the building for all tenants
- Cafeteria, catering service, sundry shop, copy center, tenant conference room and credit union with ATM
- 24-7 on-site security with controlled access
- Galleria, hotels, shopping, and restaurants within walking distance
- Highly committed building ownership and management located on-site
- Electricity approximately \$1.24/SF for 2011
- 800 - 19,500 SF available
- Debt Free Ownership



Suite 750
5,125 RSF

Suite 1150
2,467 RSF

For more information please contact:

Heather Densmore Shover

Vice President

972.450.3348

heather.shover@grubb-ellis.com

Russ Johnson

Senior Vice President

972.450.3239

russ.johnson@grubb-ellis.com

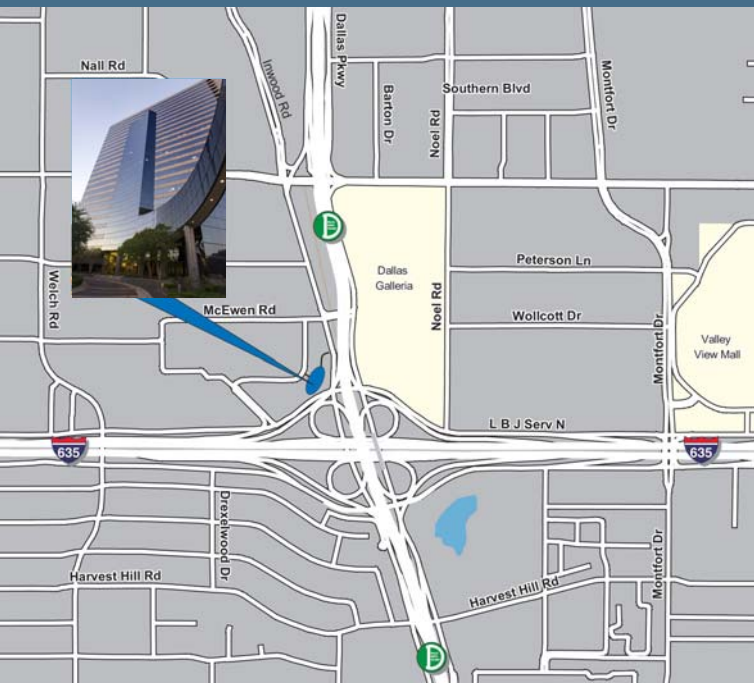
Kathy Permenter

Managing Director

972.450.3214

kathy.permenter@grubb-ellis.com

www.occidentaltower.com



Grubb & Ellis Company
5430 LBJ Freeway, Ste 1400
Dallas, Texas 75240
p:972.450.3300 f:972.450.3399
www.grubb-ellis.com



The information contained herein was obtained from sources believed reliable; however, Grubb & Ellis Company makes no guarantees, warranties or representations as to the completeness or accuracy thereof. The presentation of this property is submitted subject to errors, omissions, change of price or conditions prior to sale or lease, or withdrawal without notice.